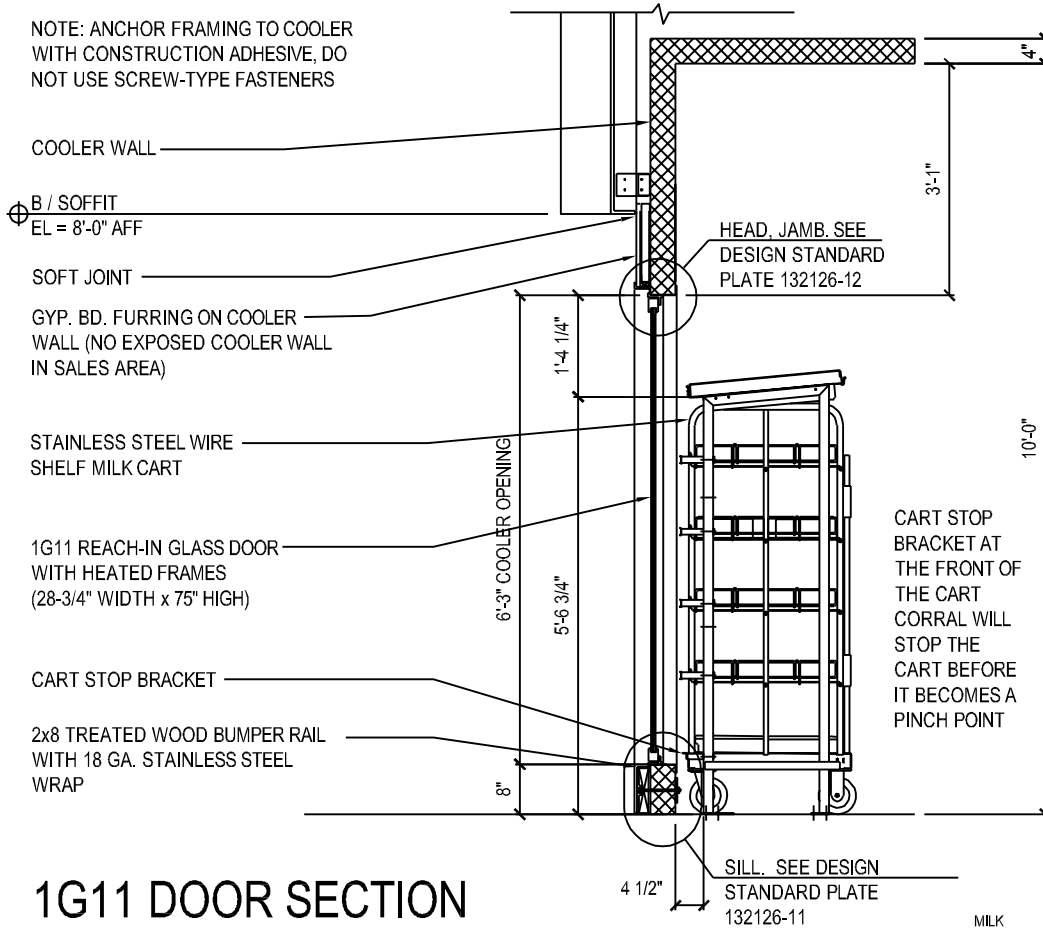
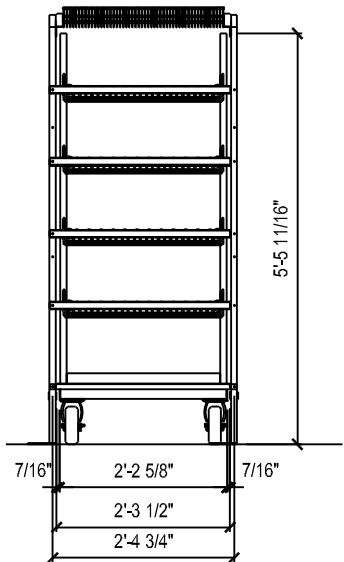


NOTE: ANCHOR FRAMING TO COOLER WITH CONSTRUCTION ADHESIVE, DO NOT USE SCREW-TYPE FASTENERS



WHEN 80 GALLON CART IS PLACED IN POSITION INSIDE THE CART CORRAL THERE WILL BE APPROXIMATELY .875 INCHES OF ROOM LEFT FOR CART POSITIONING.



1G11 DOOR SECTION

DATE	DEFENSE COMMISSARY AGENCY DIRECTORATE OF ENGINEERING FORT LEE, VIRGINIA - LACKLAND AFB, TEXAS		DESIGN STANDARD
JUN 2022	TITLE	COLD STORAGE ROOMS 1G11 GLASS DOOR DISPLAY	132126-10
		REF.	
		REV.	